

BEAVER, PA

Application Materials & Information

Beaver County Elm Street-Like Project

December 3 2008

Prepared by Pittsburgh History & Landmarks Foundation



1



2



3

Recommended Planting Materials:

1. **Daffodils (*Narcissus*)** - plant approximately 1,000 bulbs along the entire fence line.
2. **Emerald Green Arborvitae (*Thuja occidentalis*)** - plant 10-12 along the back perimeter fence lines, along the east and south fence lines as shown.
3. **Stella de Oro Daylilies** - plant generously along the entire fence line.
4. **Hetz Midget Arborvitae** - plant 8-10 along front perimeter, along the west and north fence lines as shown.
5. **Double Shredded Brown Mulch** - place 3" mulch in planting beds throughout.
6. **Grass Sod** - generously placed in the center remaining areas, around benches and fountain.

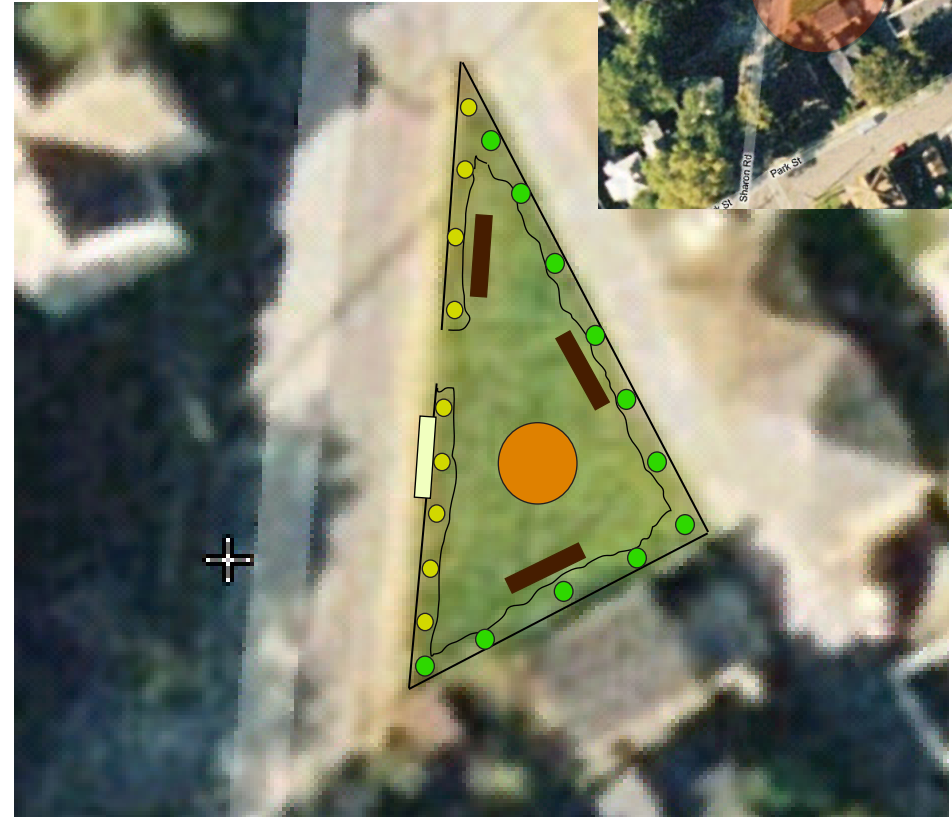
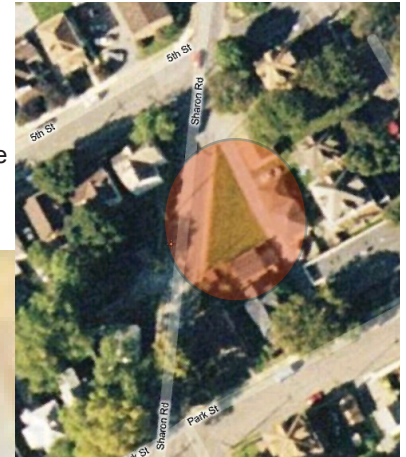


4



5

The proposed improvements for the park area on Sharon Road between 5th Street and Park Street include new planting materials and landscaping, benches, black fencing, signage, and a water fountain. Residents and visitors of all ages will enjoy and utilize this park. See aerial image to the right to locate this area, and detailed image below highlighting the proposed park design.



- (10-12) Emerald Green Arborvitae
- (8-10) Hetz Midget Arbortvitae
- ▭ (3) Benches at 6 ft. with back
- Garden Fountain, approx. 119" dia.
- ▭ "Welcome to Beaver" Sign

*Proposed Improvements to Residential Park on Sharon Road
Beaver, PA
Beaver County*

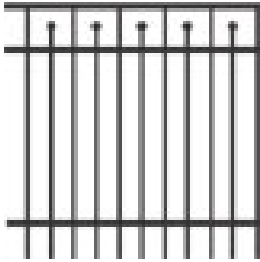




Existing Conditions: underutilized green space at an important intersection along Sharon Road in the residential area of Beaver.



Proposed Improvements: planting materials and landscaping, benches, sign, black metal fence, and fountain. Replace sidewalks on both sides along Sharon Road leading up to 3rd Avenue. Relocate or install new "welcome sign" to this location.



Black Metal Fence - installed along the edge of the park with an open entry on Sharon Road. Higher fence along the back edge and lower fence along the front edge of park.



Keystone Ridge Designs - (3) Lamplighter Benches at 6 ft. with back, Model: L26; Color: Americana Red 39/30010



Garden Fountain - approximately 119" diameter fountain, including the base, recommended examples of fountains are shown above. Regular maintenance will be required to keep the fountain attractive and functioning properly each year. Frequent cleaning and debris removal will be needed.

*Proposed Improvements to Residential Park on Sharon Road
Beaver, PA
Beaver County*